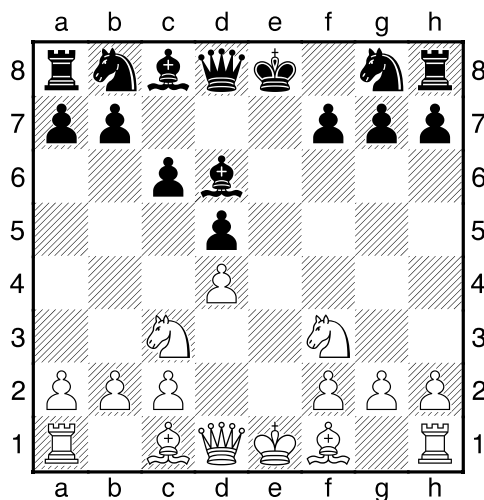


**(20) Tom,du Chatinier - Theo,Verstappen [C01]**

Intern GESS, 19.03.2018  
[Deep Fritz 14 x64 (15m)]

[C01: Frans: Ruil Variant]

1.e4 e6 2.d4 d5 3.exd5 exd5 4.Pf3 Ld6 5.Pc3 c6 [Diagram

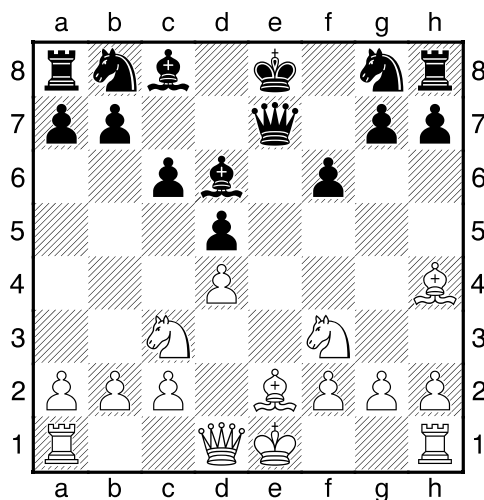


laatste zet uit boek]

6.Lg5 [Wit dreigt met materiaalwinst: Lg5xd8]

6...f6 [Zwart dreigt met materiaalwinst: f6xg5]

7.Lh4 De7+ 8.Le2 [Diagram

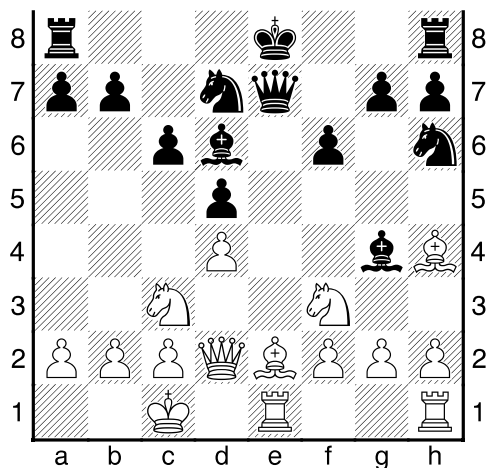


]

8...Ph6 9.Dd2 Lg4 10.0-0-0 [Wit rokeert en verbeterd de veiligheid van de koning]

10...Pd7 11.Tde1 [Diagram

a b c d e f g h

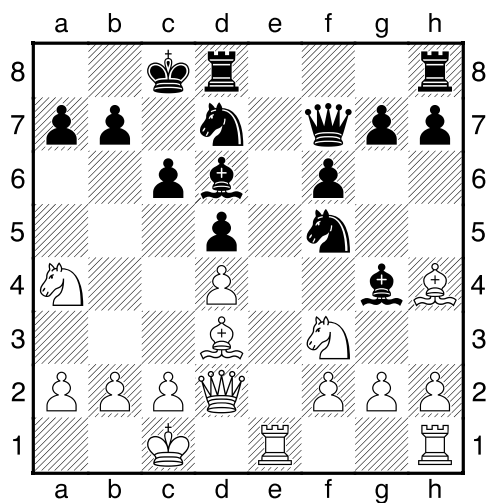


]

11...0-0-0 [11...Le6 12.Ld3 0-0 13.Te2=]

12.Ld3 Df7 13.Pa4 [13.Lg3!?! Pb6 14.Lxd6 Txd6 15.Ph4<sup>2</sup>]

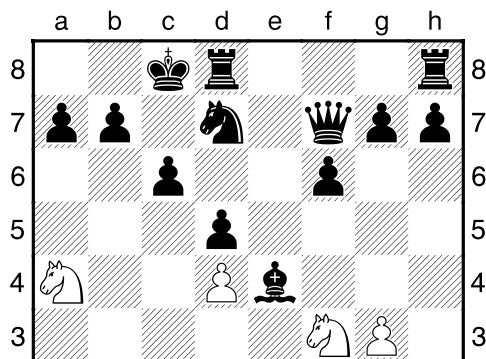
13...Pf5= [Diagram

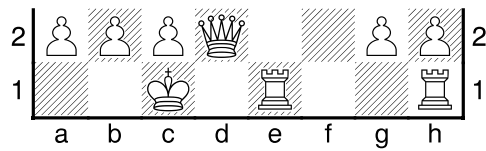


]

14.Lxf5 Lxf5 15.Lg3 Lxg3 16.fxg3 [Wit heeft nieuwe dubbele pionnen: g2+g3]

16...Le4 [Diagram





]

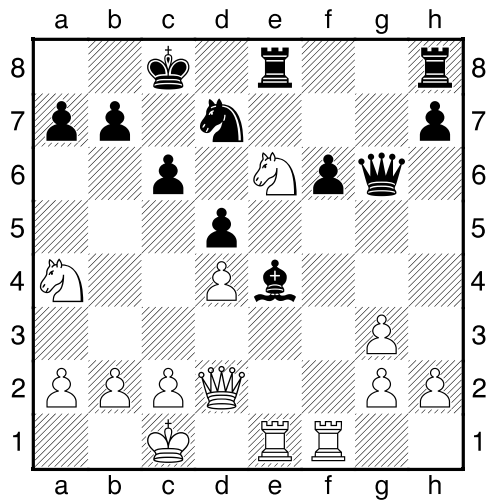
17.Thf1 g5 [17...The8= Ziet er nog speelbaar uit.]

18.Pxg5!± [Deflectie: f6]

18...Dg6 [18...fxg5 19.Txf7 Vrijmaken Deflectie Penning; ...18...-- 19.Pxf7 Wins material]

19.Pe6 [19.Pxe4!? dxe4 20.Df4+–]

19...Tde8± [Diagram



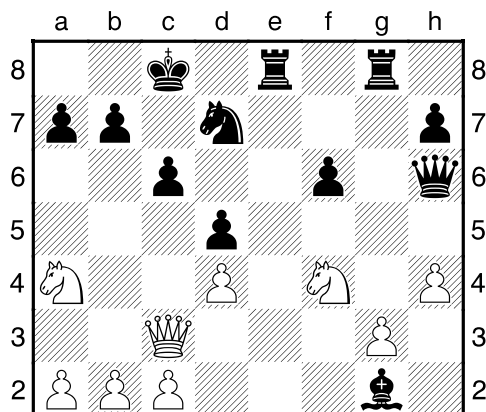
Zwart dreigt met materiaalwinst: Te8xe6]

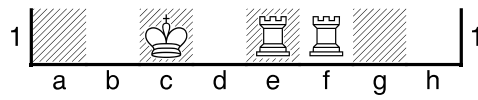
20.Pf4 [Wit dreigt met materiaalwinst: Pf4xg6]

20...Dh6 21.h4 Thg8 [Zwart dreigt met materiaalwinst: Tg8xg3]

22.Dc3 [22.Te3 Kb8²]

22...Lxg2= [Diagram

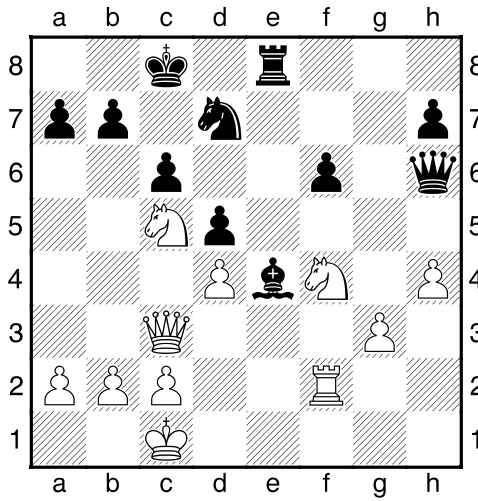




]

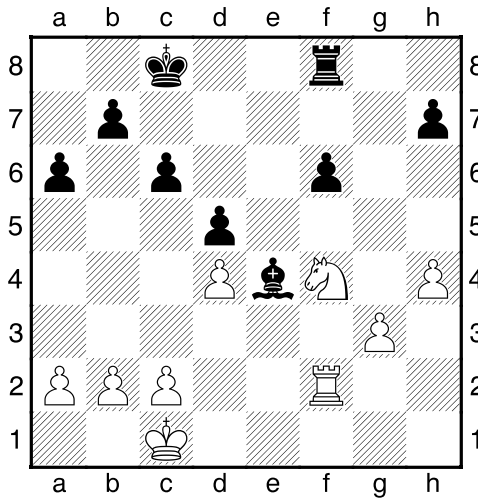
23.Txe8+ Txe8 24.Tf2 Le4 [Een erg actieve plek voor de zwarte loper.]

25.Pc5 [Diagram



]

25...Pxc5 26.Dxc5 a6 27.Dd6 Df8 28.Dxf8 Txf8 [Diagram

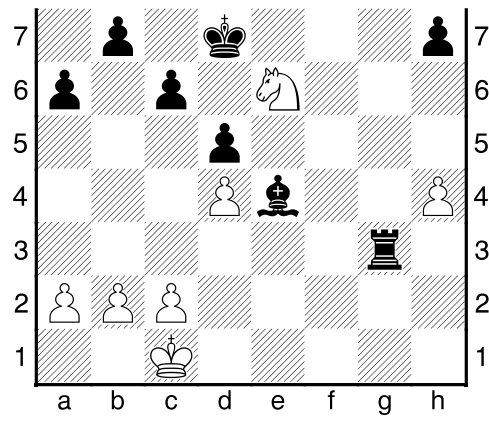


]

29.Pe6 [Wit dreigt met materiaalwinst: Pe6xf8]

29...Tg8 30.Txf6 Tg3 31.Tf8+ Kd7 [Diagram



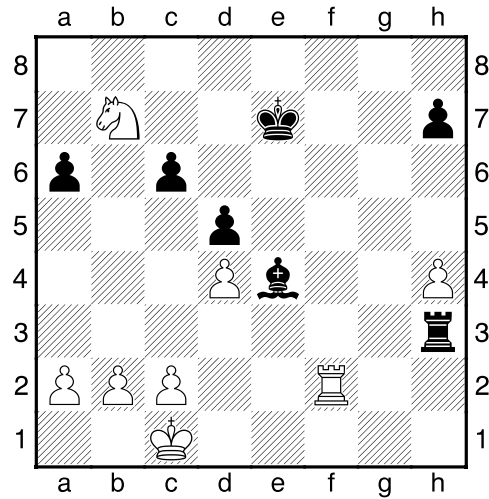


]

**32.Pc5+ Ke7 33.Tf2 Th3** [Zwart dreigt met materiaalwinst: Th3xh4]

[33...b6 34.Pxa6 Th3 35.Pb4=]

**34.Pxb7<sup>2</sup>** [Diagram

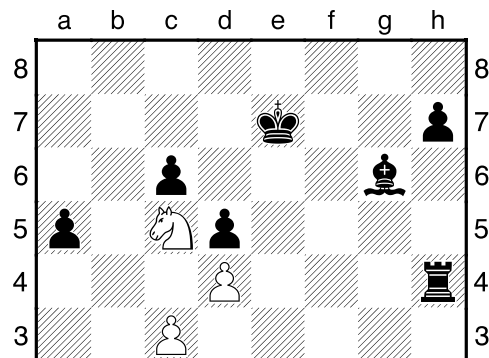


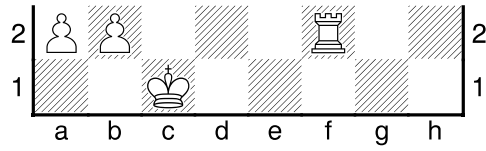
]

**34...Txh4** [Zwart heeft een nieuwe gepasseerde pion: h7]

**35.Pc5** [Een schitterende plek.]

**35...Lg6 36.c3 a5** [Diagram

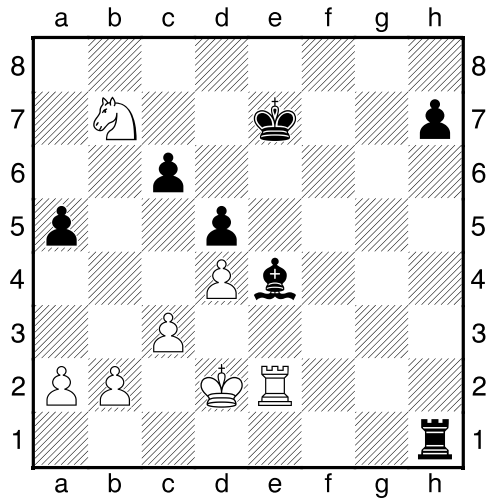




]

**37.Te2+ Le4 38.Pb7** [Wit dreigt met materiaalwinst: Pb7xa5]

**38...Th1+ 39.Kd2** [Diagram]



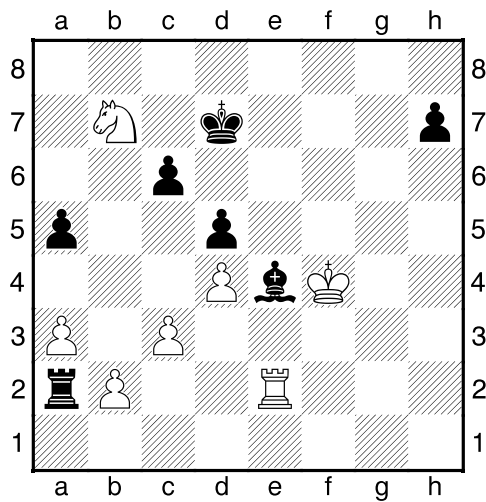
]

**39...Ta1** [39...a4 40.Pc5<sup>2</sup>]

**40.a3± Ta2** [40...a4 41.Pc5 Kf6 42.Pxe4+ dxe4 43.Txe4<sup>2</sup>]

**41.Ke3 Kd7** [41...a4 42.Pc5±]

**42.Kf4** [Diagram]



]

[42.Pxa5!?! Lf5 43.Pb3±]

**42...Ld3??** [Vergroot de problemen.]

[<sup>1</sup>42...Ta1±]

**43.Pc5+-** [43.Pc5+ Kd8 44.Pxd3+-]

**1-0**